

ADDENDUM NO. 2

October 18, 2017

To the
PROPOSAL DOCUMENTS

For the
**CHAUTAUQUA AUDITORIUM
FIRE SUPPRESSION SYSTEM**
Waxahachie, Texas



by

ARCHITEXAS

2900 S. Congress, Suite 200
Austin, Texas 78704
(512) 444-4220

This Addendum forms a part of the Bid Documents and modifies the Construction Drawings and Project Manual dated September 26, 2017 as noted below. This Addendum consists of two (2) pages, including attachments.

ELECTRICAL DRAWINGS

AD2-01 Sheet E2.00 – Electrical Plan

Replace sheet entirely, see attached. Photo of existing electrical panel on detail 4 was missing and has been added.

END OF ADDENDUM

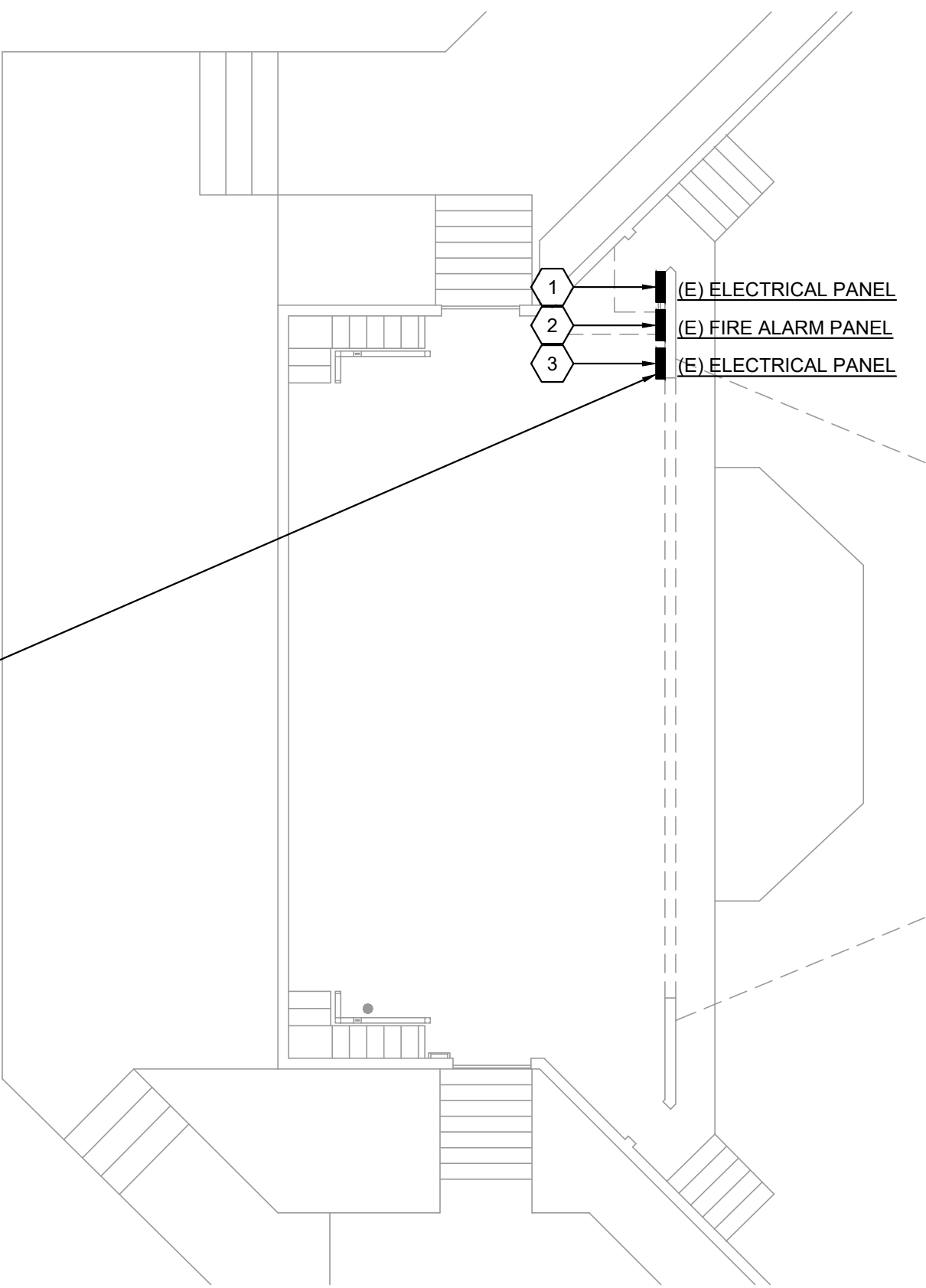
NET ELECTRICAL LOAD ANALYSIS					
SYSTEM VOLTAGE :240/120V, 1PH, 3W					
LOAD DESCRIPTION	CONNECTED LOAD (VA)	DEMAND FACTOR	SEE NOTE	DEMAND LOAD KVA	DEMAND LOAD AMPERES
GP RECEPTACLES	180.0	1.00	1	0.180	0.8
LIGHTING	22.0	1.25		0.028	0.1
ELECTRIC HEATING	375.0	1.00	2	0.375	1.6
LARGEST MOTOR	1920.0	1.25	6	2.4	7
NET N.E.C. DEMAND LOAD				2.983	12.4

NOTES:
1. PER NEC ARTICLE 220.44
2. PER NEC ARTICLE 220.60
3. PER NEC ARTICLE 430.24

LOAD ANALYSIS NOTE:
THE ELECTRICAL LOAD ANALYSIS REPRESENTS THE NET ELECTRICAL LOAD ON THE EXISTING ELECTRICAL PANEL. THE EXISTING ELECTRICAL LOAD IS UNKNOWN. THE CONTRACTOR SHALL VERIFY THE LOAD ON THE EXISTING ELECTRICAL PANEL PRIOR TO CONSTRUCTION TO CONFIRM THAT THE EXISTING LOAD PLUS THE NET LOAD IS WITHIN THE CAPACITY OF THE EXISTING ELECTRICAL PANEL PER NEC SECTION 220.87.



4 ELECTRICAL PANEL DETAIL
SCALE: 1/8" = 1'-0"



1 ELECTRICAL PLAN - LEVEL 1
SCALE: 1/8" = 1'-0"

GENERAL NOTES

- A. REFER TO SHEETS E1.00 - ELECTRICAL GENERAL NOTES & E1.01 - ELECTRICAL SPECIFICATIONS FOR MORE INFORMATION.
- B. REFERENCE ARCHITECTURAL DRAWINGS AND COORDINATE THE EXACT LOCATION AND ORIENTATION FOR ALL NEW RECEPTACLES, LIGHT SWITCHES, AND LIGHT FIXTURES. VERIFY FINAL MOUNTING HEIGHTS OF ALL WIRING DEVICES IN OR ABOVE MILLWORK WITH ARCHITECT PRIOR TO ROUGH-IN.
- C. ALL RECEPTACLES AND SWITCHES SHALL BE COMMERCIAL SPECIFICATION GRADE. VERIFY BUILDING STANDARD AND COORDINATE THE DEVICE STYLE AND FINISH WITH THE ARCHITECT PRIOR TO INSTALLATION. ALL DEVICES SHALL BE RATED 20-AMP MINIMUM.
- D. THE CONTRACTOR SHALL ACCURATELY IDENTIFY AND LABEL NEW & EXISTING BRANCH CIRCUITRY AT THE RESPECTIVE ABOVE CEILING JUNCTION BOXES. THE ASSOCIATED PANEL, CIRCUITS, AND VOLTAGE SHALL BE IDENTIFIED ON ALL JUNCTION BOXES. IN ADDITION, THE RESPECTIVE PANELBOARD DIRECTORIES SHALL BE UPDATED FOR ALL PANELS ASSOCIATED WITH THIS PROJECT.
- E. ALL GFI RECEPTACLES INDICATED ON THE PLAN SHALL MEET THE REVISED LATEST U.L. #943 REQUIREMENTS.
- F. COORDINATE ALL FLOOR CORES WITH ARCHITECT AND OWNER PRIOR TO CONSTRUCTION.
- G. COORDINATE THE EXACT LOCATION, WIRING REQUIREMENTS, AND NEMA CONFIGURATION FOR ALL EQUIPMENT WITH THE MANUFACTURER PRIOR TO INSTALLATION.
- H. ANY EXISTING EQUIPMENT THAT IS CALLED OUT ON THE PLANS TO BE REUSED BUT IS FIELD DETERMINED TO BE DAMAGED IN ANY WAY SHOULD BE BROUGHT TO THE ATTENTION OF THE ENGINEER.
- I. PROVIDE COVER PLATES FOR ALL OPEN JUNCTION BOXES. FIELD VERIFY EXISTING CONDITIONS.
- J. THE CONTRACTOR SHALL EXERCISE CARE TO PREVENT ANY DAMAGE TO EXISTING CONDITIONS, UTILITIES, OR BUILDING ELEMENTS. DAMAGED ITEMS SHALL BE REMOVED AND PROMPTLY RETURNED TO SERVICE WITH NEW MATERIAL TO MATCH EXISTING.

NOTES BY SYMBOL 'E#'

- 1. EXISTING ELECTRICAL PANEL TO REMAIN.
- 2. EXISTING FIRE ALARM PANEL. REFER TO FIRE PROTECTION SPECIFICATION SECTION 21 13 16 FOR MORE INFORMATION.
- 3. EXISTING 200 AMP, 240V, 1-PHASE, 40 SPACE MCB PANEL TO REMAIN. RE: ELECTRICAL PANEL DETAIL, THIS SHEET FOR MORE INFORMATION.
- 4. PROVIDE NEW LOCKABLE 20 AMP, 1-POLE CIRCUIT BREAKER IN EXISTING ELECTRICAL PANEL FOR NEW UNIT HEATER PER NEC 422.32(B).
- 5. CIRCUIT NEW UNIT HEATER TO NEW LOCKABLE CIRCUIT BREAKER IN EXISTING ELECTRICAL PANEL. RE: ELECTRICAL PANEL DETAIL. THIS SHEET FOR MORE INFORMATION. MOUNT HEATER RECESSED IN WALL AT 24" AFF TO BOTTOM OF BOX PER MANUFACTURER'S INSTALLATION INSTRUCTIONS.
- 6. PROVIDE NEW 20 AMP, 1-POLE CIRCUIT BREAKER IN EXISTING ELECTRICAL PANEL FOR NEW FIRE RISER ROOM LIGHTING AND RECEPTACLE.
- 7. PROVIDE NEW WALL MOUNTED LUMINAIRE ABOVE DOOR WITH OCCUPANCY SENSOR WALL SWITCH.
- 8. PROVIDE NEW GFCI DUPLEX RECEPTACLE.
- 9. PROVIDE NEW 40 AMP, 1-POLE, INVERSE-TIME CIRCUIT BREAKER IN EXISTING ELECTRICAL PANEL WITH 20 AMP WIRE (2#12 AWG (Cu) #12G) FOR SERVICE TO NEW DRY PIPE SPRINKLER SYSTEM AIR COMPRESSOR IN FIRE RISER ROOM. COORDINATE WITH FIRE SPRINKLER CONTRACTOR FOR EXACT AIR COMPRESSOR SPECIFICATIONS AND POWER REQUIREMENTS PRIOR TO CONSTRUCTION.
- 10. PROVIDE JUNCTION BOX AND SINGLE-POLE, MOTOR RATED SWITCH AT ACCESSIBLE LOCATION FOR POWER TO NEW SPRINKLER SYSTEM AIR COMPRESSOR. COORDINATE WITH FIRE SPRINKLER CONTRACTOR TO MAKE FINAL CONNECTION.

LUMINAIRE SCHEDULE											
TYPE	MANUFACTURER (DESIGN BASIS)	CATALOG NO.	LAMPS			FIXTURE WATTS	FIXTURE LUMENS	VOLTS	MOUNTING	REMARKS	
			NO.	TYPE	TEMPERATURE						WATTS
A	LITHONIA	ZL1N-L24-2500LM-L/LENS-MVOLT-40K-80CRI-E7W-WH	1	LED	4000K	22	22	2,689	120	SURFACE WALL	LED STRIP LIGHT, LESS LENS, BATTERY PACK FOR MINIMUM 90 MINUTES EMERGENCY OPERATION, WHITE FINISH.

NOTES:
1. WHETHER INDICATED IN CATALOG NUMBER OR NOT, CONTRACTOR TO PROVIDE ALL NECESSARY ACCESSORIES AND MOUNTING HARDWARE REQUIRED FOR A COMPLETE INSTALLATION.
2. CONTRACTOR SHALL COORDINATE ADDITIONAL LIGHT FIXTURE MOUNTING REQUIREMENTS WITH MANUFACTURER PRIOR TO PURCHASE.
3. ALL LIGHT FIXTURE FINISHES SHALL BE SELECTED AND APPROVED BY THE ARCHITECT PRIOR TO PURCHASE AND INSTALLATION.
4. CONTRACTOR TO CONTACT LOCAL LIGHTING CONTROLS REP A MINIMUM OF 2 WEEKS PRIOR TO INSTALLATION TO DISCUSS PROGRAMMING REQUIREMENTS.

LIGHTING DEVICE SCHEDULE			
DEVICE	MOUNTING	NOTES	
OS SENSORSWITCH: WSX	WALL	NOTE 1	

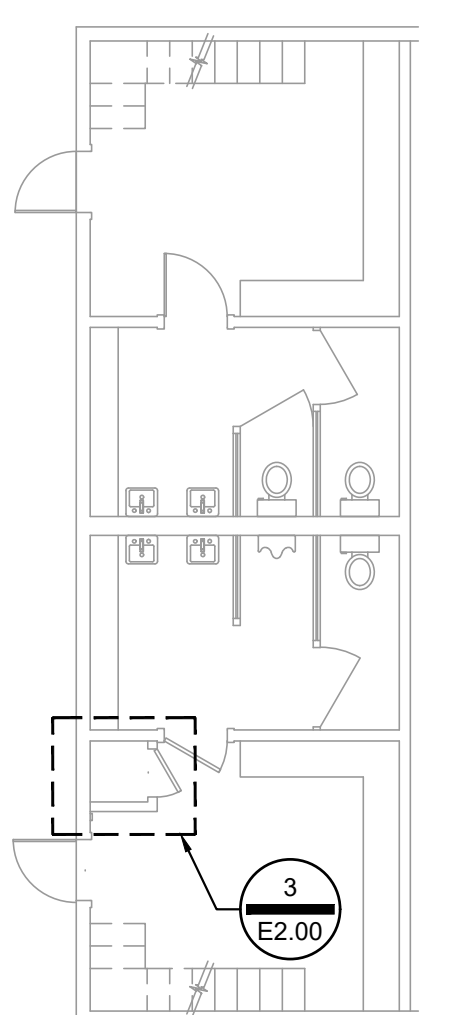
NOTE: DISABLE PHOTO SENSOR OPTION ON ALL OCCUPANCY SENSORS. SET SENSORS TO MANUAL-ON, UNLESS NOTED OTHERWISE.

LIGHTING CONTROLS LEGEND NOTES:
1. SINGLE CIRCUIT WALL MOUNTED OCCUPANCY SENSOR.

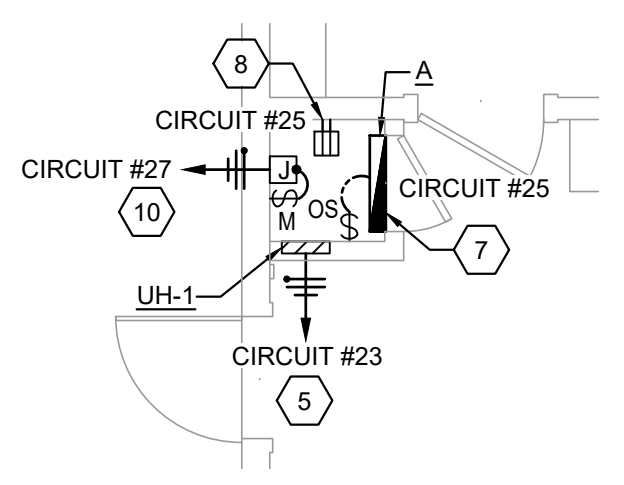
LIGHTING CONTROLS GENERAL NOTES:
1. COMBINE SWITCHES/DEVICES TO ACHIEVE MINIMUM DEVICES & FACEPLATES WHEREVER POSSIBLE.

UNIT HEATER SCHEDULE												
MARK	MOUNTING	SERVICE	CFM	WATTS	TEMP. RISE (DEG. F)	ELECTRICAL					MODEL SERIES	NOTES
						VOLTS	PH	HZ	AMPS	MAKE		
UH-1	RECESSED	FIRE RISER	50	375	23	120	1	60	3.1	DAYTON	5ZK52D	ALL

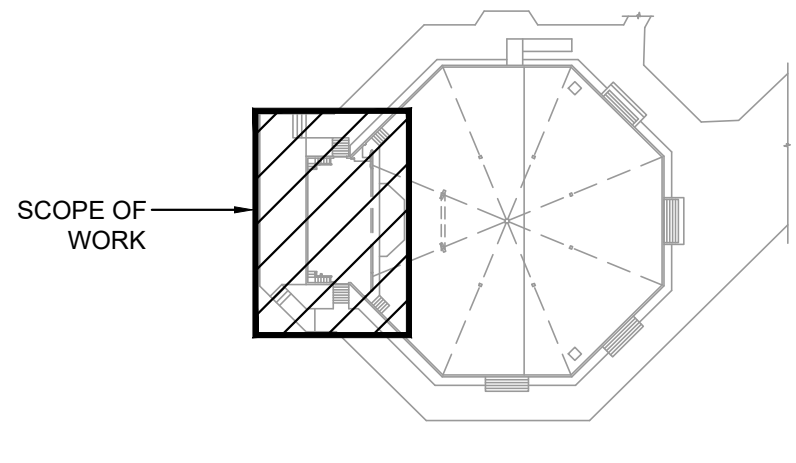
NOTES:
1. PROVIDE WITH INTEGRAL THERMOSTAT.



2 ELECTRICAL PLAN - BASEMENT
SCALE: 1/8" = 1'-0"



3 ENLARGED ELECTRICAL PLAN FIRE RISER ROOM
SCALE: 1/8" = 1'-0"



KEY PLAN

THIS DOCUMENT, THE IDEAS AND DESIGNS INCORPORATED HEREIN ARE AND SHALL REMAIN THE PROPERTY OF APTUS ENGINEERING, LLC. THESE DOCUMENTS ARE NOT TO BE USED OR ALTERED, IN WHOLE OR IN PART, FOR ANY PURPOSE OTHER THAN THE ORIGINAL INTENDED USE.

COPYRIGHT
The Contractor shall verify and be responsible for all dimensions. DO NOT scale the drawing. Any errors or omissions shall be reported to Architexas without delay. The Copyrights to all designs and drawings are the property of Architexas. Reproduction or use for any purpose other than that authorized by Architexas is forbidden.

REVISION HISTORY
1. Addendum #1 17 October 2017
2. Addendum #2 18 October 2017

